



# ARCHITECTURE AND DESIGN





## THE STRASSACKER ART FOUNDRY

---



Seeing how a new and complete metal object evolves by means of many elaborate individual steps during the casting process is a fascinating experience for us time and time again, even after many years of expertise.

We place the main focus of our everyday work on cultivating and further developing specialized handcraft techniques. Only by doing so are we able to satisfy the most diverse demands of our customers and to continually be a reliable and professional partner for even more challenging projects.

The many projects which we have carried out in cooperation with artists, designers and bronze architects fill us with pride and gratefulness for the trust which others have placed in us. We are ready and willing to take on new projects and are looking forward to cooperating with you.

The information in this brochure should give you a brief overview of the diversity and the almost infinite design possibilities of our work.



Edith Strassacker  
Managing Director



»Full-blooded Arabian stallion  
Habdan Enzahi«, Marbach  
Sculptor: Ingo Koblischek



## THE ALLURE OF ART, DESIGN, AND HANDCRAFT

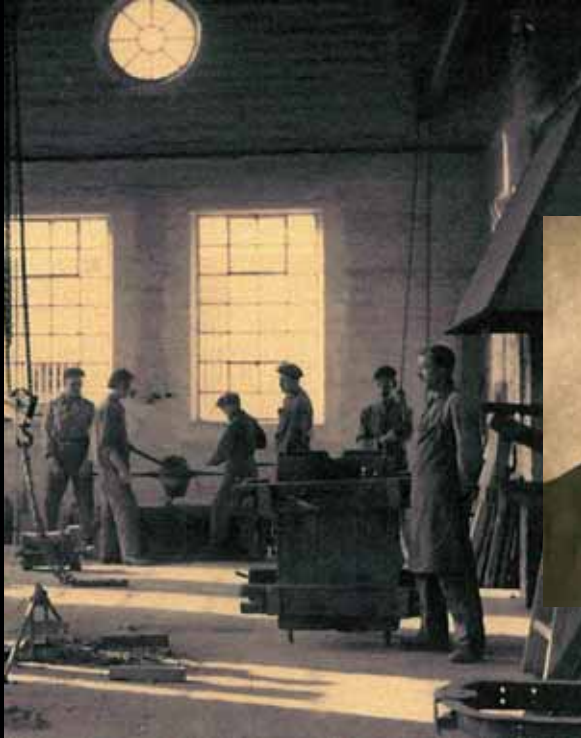
Culture evolved as the result of the human capacity to express oneself artistically. With no other form of art are the possibilities for expression greater than with sculptures – the object, the sculpture, and the plastic. The advantage of sculptures as compared to images is justified by the third dimension; the portrayed object has a physical aura and is thus much more similar to the original than a painting or a drawing could ever be. In our studios and workshops artistic design and architectural objects

based on the visions of renowned and internationally recognized artists, architects and designers are founded into perfectly handcrafted works of art. The interplay between artistic and creative expression and traditional handcraft skills are what make Strassacker's method of work so unique.

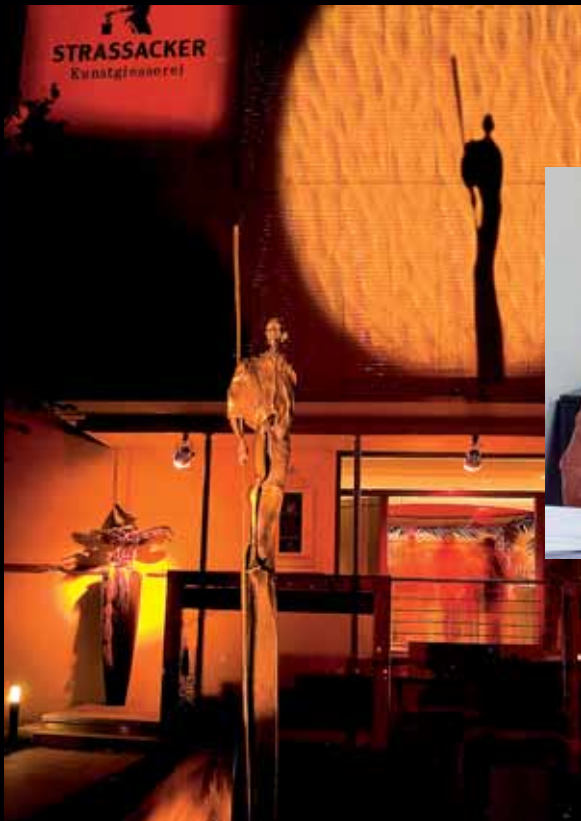
»Dreambird«  
Sculptor: Kurt Passon







Founder of the firm  
Ernst Strassacker



Managing Director  
Edith Strassacker

## THE COMPANY

Art casting – the family business has dedicated itself to this old form of handcraft. Ernst Strassacker founded the art foundry in 1919 in Suessen (Baden-Württemberg – Germany). Nowadays, approximately 500 employees specialize in the design, casting and processing of objects of art in the company headquarters and in its subsidiary in France. Acting as managing director, Edith Strassacker runs the family business in its fourth generation. At operational level, the main priority is attached to cultivating and promoting the existing handcraft skills, while technological processes and operational procedures are continually further developed. As for remittance work in art casting, we are also able to secure our long-term position as an art foundry and reliable and professional partner of artists, sculptors, architects, commu-

nities, and art collectors thanks to the high quality, extensive experience and the continual training of artistic craftsmen. With works of art and representatives all over the world, the art foundry is among the leading international manufactures. In its studios, the casting house, and the chasing and patination workshops, sophisticated sculptures, aesthetic objects, modern architectural items and large plastic objects are created by renowned artists and designers, whose long-lasting high-quality work builds bridges between generations.

*Illustration below: Headquarters in Suessen, Baden-Württemberg (Germany)*

*Image to the right: Subsidiary branch in Heimsbrunn, France*







»Floating disc«, Ludwigsburg  
Sculptor: Günter E. Herrmann  
Weight 3.5 t, 450x300 cm  
(Width x Height)



»Schenken Fountain«, Michelbach  
Sculptor: Hermann Koziol

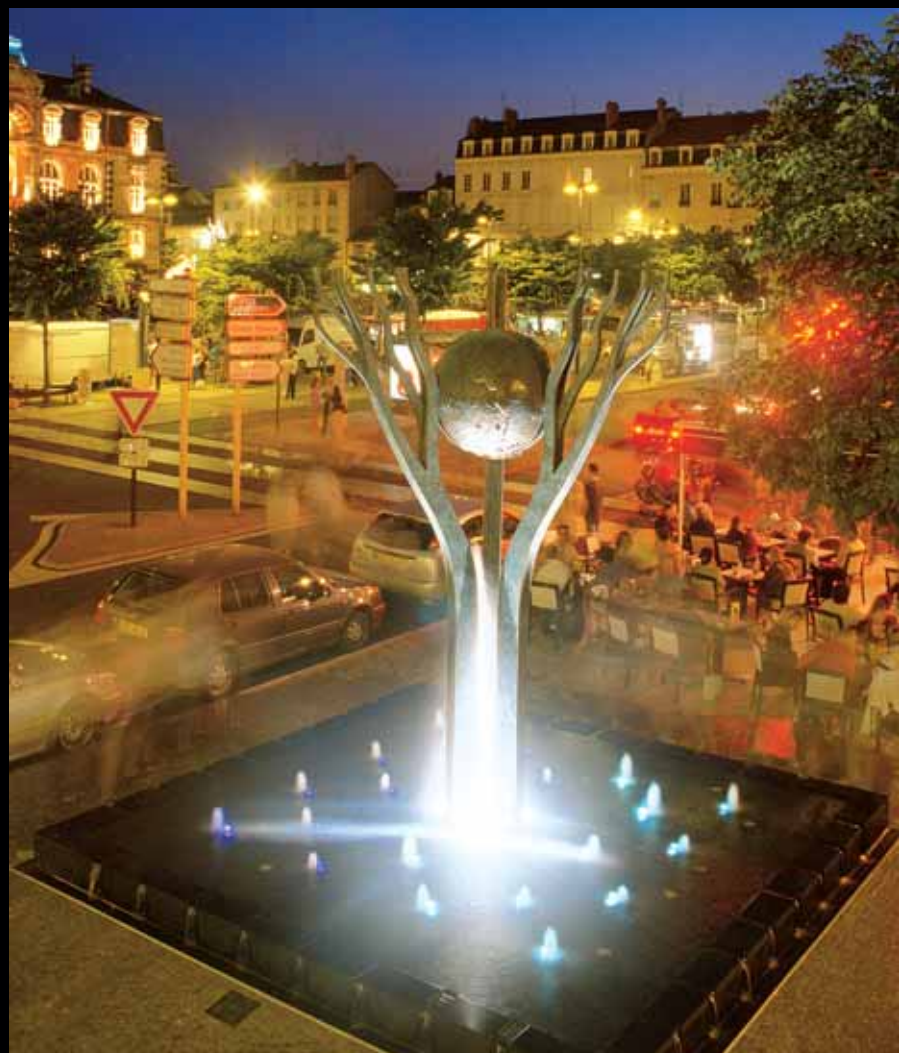


## THE ALLURE OF WATER IN ARCHITECTURE

For decades already, our professionals and specialists have been constructing high-quality fountain systems with various sophisticated functions, e.g. complicated water technology, as well as static demands.



*Fontain »Vision 2000«  
Three playing stallions  
Bildhauer: Ingo Koblischek*



*»Fountain with the globe«  
in Roanne, France  
Sculptor: Michel Granger*



The garden and entrance area are the showpiece of the house. They are symbols of the lifestyle of its inhabitants. Designing them is a highly challenging creative task.



## ARCHITECTURE — BUILDINGS — ENTRANCE SETTINGS

When designing the entrance area, it is essential to match functionality and contemporary design with an appropriate overall setting. Whether it is well-balanced, stylistically sophisticated lighting, ergonomically harmonious fixtures, design and functional communication

and letter-box fixtures, Strassacker products offer you all the elements you need to put these demanding designs into practise with the highest of quality.







## BUILDINGS – ENTRANCE SETTINGS DECOR AND FIXTURES

The first contact you make when entering a room is with the door handle – an uncommonly pleasing experience if it's a fitting by Strassacker. The surface texture of the bronze has a remarkably sensuous feel to it. The classically reserved look matches virtually any interior decor.







## BUILDINGS – ENTRANCE SETTINGS DECOR AND FIXTURES

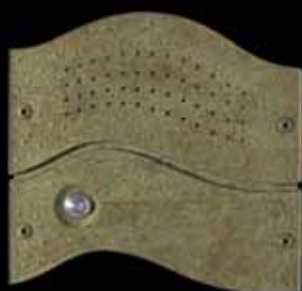
Strassacker fixtures open new horizons for architectural design for you. The antique casting surface is unmistakable. With a keen sense for the diverse ways of using the bronze materials, we have designed

these fixtures and decors for the latch-keys. The ergonomics of the latch-key clearly reveal the points of contact. Caressing the ergonomic form of the latch-key by hand soon brings out the best of the gleaming bronze. Ageing without growing old.





23



23

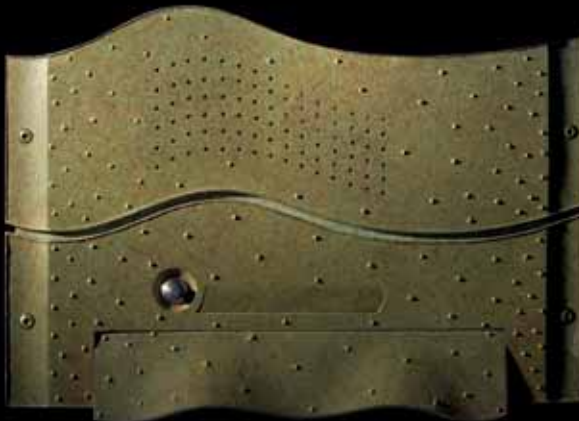
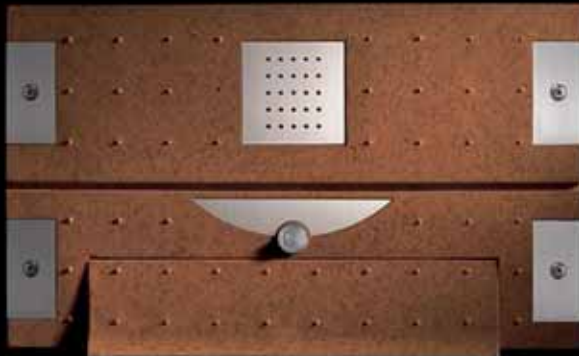




## BUILDINGS – ENTRANCE SETTINGS COMMUNICATION AND LETTER-BOX FIXTURES

The panels for the communication fixtures at the house entrance are harmoniously fitted to the aesthetics of our collections. From the door-bell to the motion detector, we offer a broad selection of functional models in various designs. Time-tested technology paired with alluring material aesthetics. The bronze plates can be custom-made according to your wishes.

A mailbox by the entryway leaves the first, decisive impression of your home: aesthetic, sophisticated and inviting. The modular design of the mailboxes gives rise to customized solutions.







## LIGHTING

Whether it is a private or public room, with Strassacker lighting fixtures you can create different moods with light. The soft, discreet light with the effect of a starry sky radiates through the bronze cupola. The distribution of light from the side provides sufficient light for the home entrance and terrace area. Add verve to your garden with Strassacker wayside lamps.

Shapes in bronze, stainless steel and – optionally – synthetic form delightful points of focus. With their uniquely iridescent patina, these fittings will blend in superbly with any setting. The light they emit also serves to highlight the fixtures themselves and their fine surface texturing.







## SIDE BANISTERS – HANDRAILS

According to the criteria of functionality and the “language of the forms” of the spatial architecture, it is our task to draw up design solutions, which precisely match the ideas and demands of our clients. Our decades of experience in the realization of such tasks guarantee optimum results.



*Silver-plated  
items –  
Ready for  
shipping.*





*Perfection to the slightest  
detail in terms of design  
and craftsmanship*



## SIDE BANISTERS – HANDRAILS

Our professional expertise which our clients rely on is based on our ability to create and implement a harmonious and optimum solution in terms of function and design even for the most difficult spatial settings.







*National Gallery in Berlin, Gates*  
*Prof. H.G.Merz*



## OBJECTS WITH A FUNCTION

Design elements in architecture, as a functional component of buildings, such as gates, entrances, banisters, in harmony with the overall design concept and created with noble metals guarantee durability and premium quality.

Optically light and filigree, robustly manufactured.

The gate defies wind and rough weather. The gate is solidly anchored in the ground and enhanced with matching fencing in various dimensions.



1

Illustration 1:  
»Palace Gate«,  
Designed and constructed  
in our studio

Bild 2: »Ornament doors  
for display cases«  
Designed and constructed  
in our studio

Image 3:  
»Senso Garden Gate«,  
Strassacker  
architectural elements



2

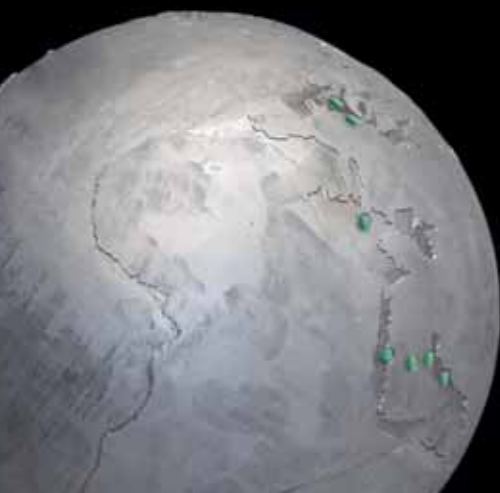


3





»Clocktower« Aramco Project





## INTERNATIONAL PROJECTS

Sculptors and designers in the studio, engineers and craftsmen for matters concerning water technology and statics, as well as technicians for the final assembly. Swabian diligence and precision are among our foremost quality attributes.

Strassacker is a well-known address for artists, architects, and designers from all over the world for carrying out their projects - from smaller sculptures to large art projects.

The benefits of cooperating with a foundry with decades of experience are self-evident. Not only craftspeople, but also numerous specialists from the most diverse professional backgrounds are at your service for complex large-scale projects.



# ARCHITECTURE

# DESIGN



*The most diverse tasks with detailed specifications are completed with the necessary precision., as demonstrated by the panorama disc here*



## INSCRIPTIONS

Inscriptions on buildings in both the interior and exterior, in all sizes and designs, and using the most diverse materials. Designs for individual letters, related typefaces, or individually created plates.

فندق

Room 201

CONFERENCE HALL



غرفة رقم ٢٠١

RECEPTION

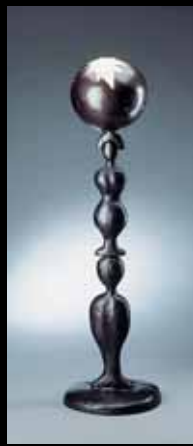
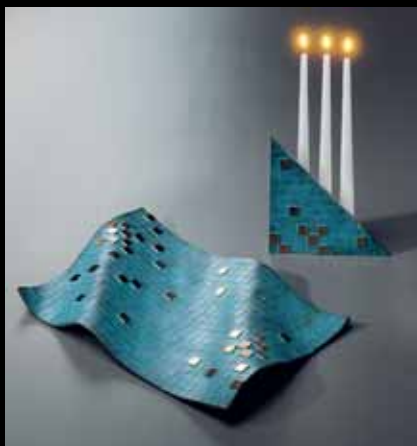
25  
KINGDOM CENTRE AVE.



HOTEL







## INTERIOR – ROOM DESIGN / SETTING

It is an exciting process, when room settings can be recreated by means of design and art objects and when an impressive ambience emerges. The exciting possibilities for doing so are nearly infinite.





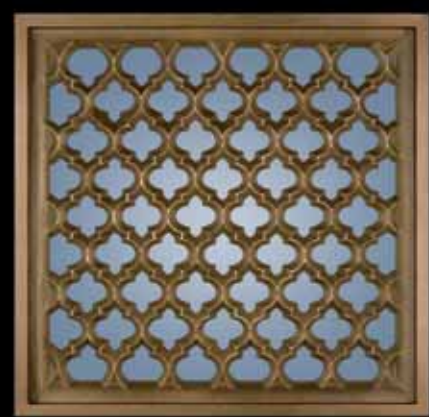




## ARCHITECTURE — ORNAMENTS — DESIGN

These brilliantly designed architectural elements add a new aura to a room and evoke thoughts of art treasures from days gone by. These design elements can be added to any setting. Whether as a door ornament, window grille, part of a fence, side banister, partition,

covering for air-conditioning, or as a decor item – they offer unique design possibilities for all areas of the building architecture.







## ARCHITECTURE — ORNAMENTS — DESIGN



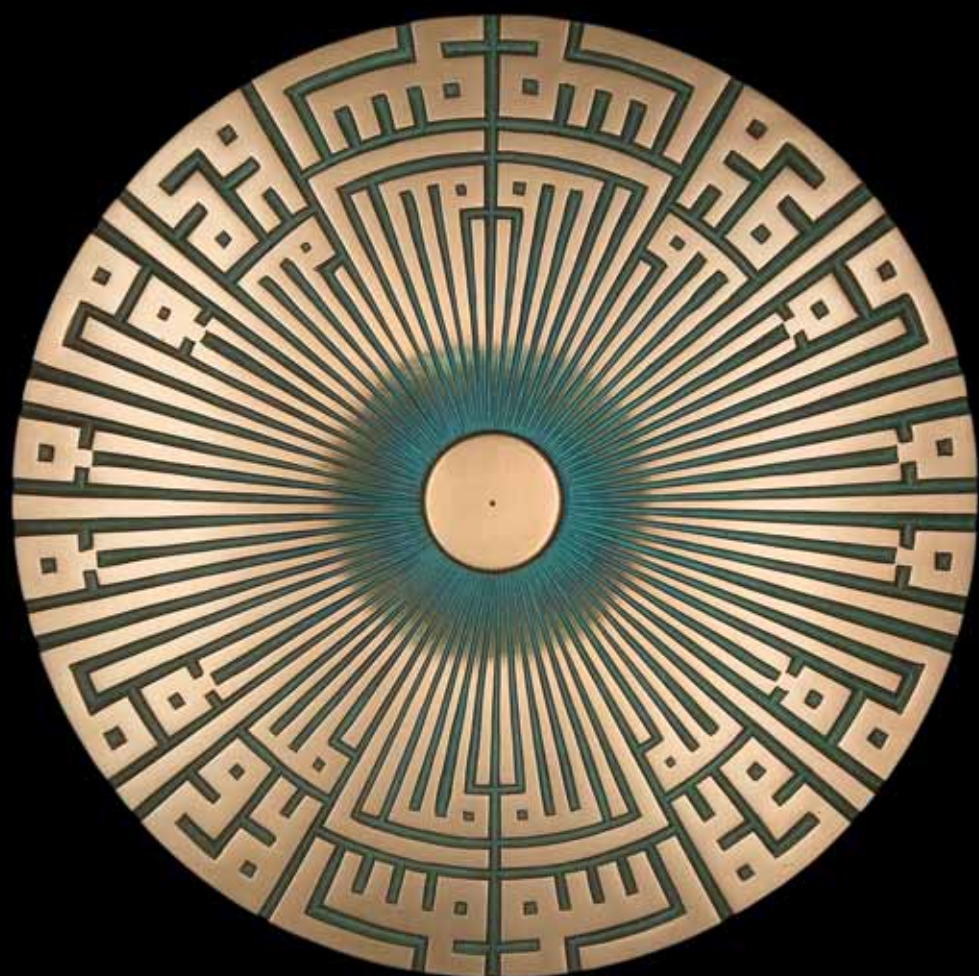
Whether they stand freely in a room or are combined with diverse other materials as a background, they give rise to expressive and gracious room settings.

Material compositions – from a rugged, emotional surface to

mirror-finished elements – can be created using the most diverse patinas and combinations of materials.







## ARCHITECTURE — ORNAMENTS — DESIGN

These ornamental design elements are styled and constructed by our artists and designers in cooperation with craftsmen's and artists' workshops from a wide array of cultural backgrounds. In doing so, they consistently take into consideration the wealth of cultural and design-related experience of the respective »language of forms«, which spans generations.









## BAMBI FILM PRIZE »MADE IN SUESSEN«

It is regarded as the German counterpart to the Hollywood Oscar and a reflection of what interests and moves our society: the Bambi, the prize with which the publishing house Burda has been honouring national and international personalities from cinema, theatre, music, fashion, politics, business, and sport for over 50 years.

Germany's most significant and oldest media prize honours people who touch, impress and inspire people with their achievements. We have been casting the Bambi for 46 years. Every Bambi is an original, as the casting mould is manufactured by hand and battered after the bronze has cooled off. Not until after the precise and detailed work of the chaser and numerous complicated manufacturing phases does the ultimate form emerge from the mould. It then attains its inimitable shine in the galvanisation bath,

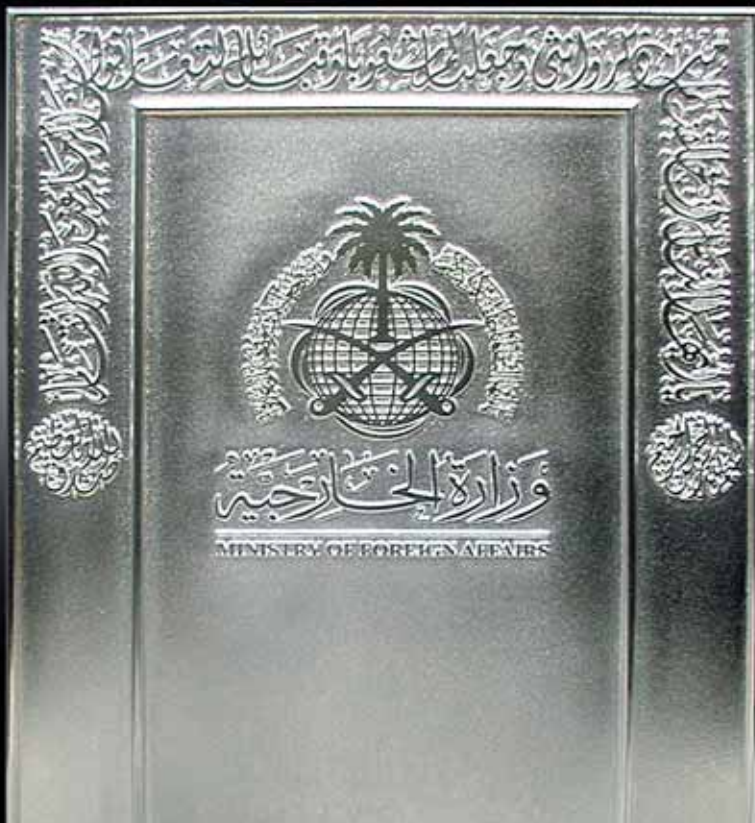
which then rounds off the work of art. In line with the wish for a more modern Bambi expressed by the Burda publishing house, the sculptors in our studio designed a new dynamic version of the Bambi, which still taps into the traditional Bambi though.





We can turn your ideas, designs, and models for cups, awards, and medals into prizes for cinema, television, theatre, music, fashion, politics, business, and sport. They can be designed and finished either as individual awards or as a series in bronze, aluminium, or silver.

»Horse-Cup«



»Artist-Cup«

## CUPS



*Illustration 1: Cup for the  
»Angel-Award Monaco«*

*Illustration 2: Göppingen  
»Service Cup«*

*Illustration 3: Cup for the  
»Nordic Skiing World  
Championship«, in  
Oberstdorf 2005*

*Illustration 4:  
»Germany Cup«*



2



3



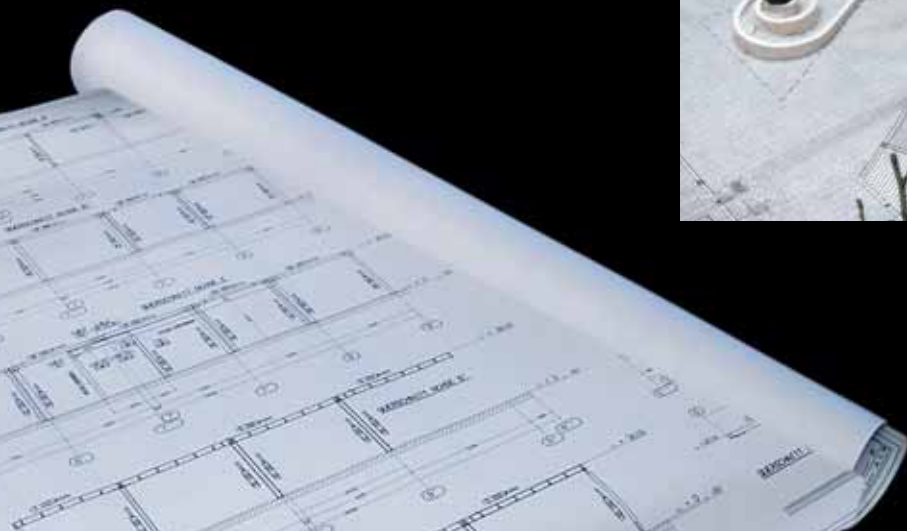
4



## SUPPORT IN THE PLANNING OF PROJECTS . . .



Should problems arise, our motto is »advice and action«. A successful model is the prerequisite for a perfect casting. We offer our support while creating the models along with information on technical procedures, the procurement and provision of materials. Even when it comes to more complex model assembly and transport tasks, the artists and architects profit from the experiences of the art foundry. After consultation you may make use of all the technical possibilities in the studios and fall back on the expertise of our specialists. Skilled professionals in several types of crafts – from designers, artists, art designers, technicians, chasers to – patination specialists will offer you advice and assist you. On request, the staff accompany the work of the artist or architect from transport to final assembly.



## ... AND IN THEIR REALISATION



When carrying out large art projects, expertise is in demand for several different steps. Strassacker offers support during cooperation between architects, artists, and communities. This entails detailed costs breakdowns and schedules, technical solutions such as static calculations and water technology for fountain systems as well as the complete final assembly.



An idea is turned into matter . . . .  
A sudden idea, an intuitive inspiration or a long-held wish – there are many different ways to an idea. Strassacker supports the process from the vague initial idea to its concrete realisation. A team of experts also develops suggestions according to the client's criteria, if necessary and produces sketches and designs, which ultimately serve as the basis for a detailed offer.



*Sculptor  
Wolfgang Knorr  
In our studio*





## FROM AN IDEA TO A MODEL

The model – the creative preliminary stage for the art casting . . . The designs have been approved according to the pattern and wishes of the client – the conceptual phase has thus been completed. Now its implementation to a three-dimensional model follows. To do so, the experts use a wide array of materials such as wood, Styrofoam, cement, plastics, plasticine, or modelling wax. Well-trained sculptors, designers, craftsmen and numerous experts from the most diverse professional backgrounds assist the clients with their artistic and technical know-how. We would also be happy to provide contacts to freelance artists for communities or public tenders, since renowned and creative sculptors are among our customers. Before the actual



casting process, the client must offer his/her consent for the ultimate model. Detailed photographs generally serve as the basis for evaluation and inspection. On request, however, the customer may also approve the project on site. Strassacker advises every artist on the basis of the model with which the casting procedure begins.



*Sculptor  
Woytek  
At work in our  
studio*



## THE CAST AND THE CREATION OF THE SILICON MOULD

Depending on their form and size, the individual models are cast in three different procedures, using techniques which fall back on a century-old tradition. Accordingly, up to 20 different work stages are necessary until the original model becomes a finished work of metal art. On the basis of his/her model, we advise every artist on which of the casting procedures can be used.



Sandcasting is mostly used today for easily formed items. More complicated objects are cast using the wax smelting procedure.

This procedure offers more possibilities for artists who would like to touch up their work with wax themselves or with the support of the craftsmen. For smaller plastics and objects difficult to mould, the vacuum cast procedure is an additional option.

### **The creation of the silicon mould**

In order to create a casting mould for the wax smelt mould, a wax positive of the respective object is required for every individual casting procedure. In order to obtain this positive wax model, which precisely matches the original model and can be smelted later, a flexible negative mould has to be created first. In order to do so, each half of the original model must be overlaid with clay plates, which are then covered with plaster. Once the so-called cement support shells are dried, the clay layer is removed and both shells are laid into the model again. Afterwards, the liquid gelatine or silicon is poured into the respective half of the hollow cavity between the original model and the cement. The »true-to-original« negative form is now ready for the creation of the wax positive.



## THE CHAMOTTE CASTING PROCEDURE

Since the metal cannot be cast directly into the flexible negative form, the positive wax model must be developed in additional work steps. To do so, both halves of the mould are put together and hot wax is poured onto them. After several minutes of cooling off, a wax layer develops. The excess wax is then poured out again, so that a hollow wax model comes about. This unfinished wax mould is filled with a chamotte core, then touched up by the artist again and finally enhanced with casting canals. The whole object is then enveloped with chamotte and baked in the oven for

five to eight days at more than 600°C until the wax has smelted and the hollow cavity is completely dried out.

In this hollow cavity during the next step, the liquid bronze heated in the crucible oven at approximately 1250° C is freed from the cinder and then poured into the baked mould all at once. Many artists want to experience this moment, when their sculpture is cast.

*Sculptor  
Ingo Koblischek  
touching up the wax*





## CASTING CERAMICS

When manufacturing ceramic, runner moulds are added to the hollow wax model, which is then dipped into the ceramic mass four to six times depending on its size, and then dried. The shell formed during this process, which has a height of 8 to 10 mm, is baked in the oven. The wax smelts during this phase and the shell becomes hard enough to absorb the fiery metal. After cooling down, the ceramic shell is broken down.



## SANDCASTING



Sandcasting, a still frequently applied and time-tested technique, is used for reliefs, inscription plates, coats of arms, and small sculptures with few undercuts. Casting sand has a particular consistency. Its fineness allows for detailed models. When pounded with compressed air it attains a high density and the necessary stability for casting. It is then poured into the cast cavities and hollow spaces. Afterwards, this casting mould can never be used again. The artist's model made of durable material – generally plasticine, wax, plaster or wood – is deconstructed according to its form, before the art designer spreads it into moulding boxes with two or multiple sections. Since casting sand is not elastic, all undercut batches of a model must be cast with sand

pieces which can be pulled out from the side – in so-called core pieces. The ready pounded exterior mould is taken apart once again in order to take out the model, once the core pieces have been pulled off by means of the core fork and adjusted into the negative mould again. Now the initial cut system is cut into the mould with the required inlets, pouring funnels, and ventilation canals including feeders. After that the box is tightly clamped together and the liquid bronze is poured in. The unfinished castings are removed from the broken down mould and passed on to the chaser for further processing.



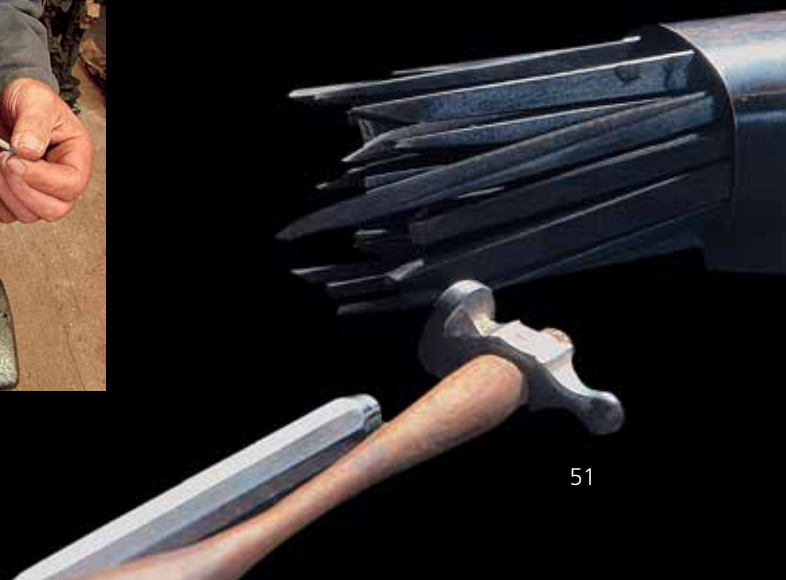


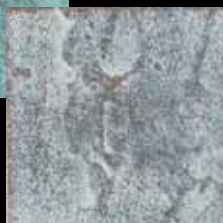


## BRILLIANT SURFACES WITH PUNCHES AND CHISELS

After moulding, the unfinished product is further processed in the chaser workshop until the artist's design has been put into practice exactly. After the cooled chamotte cover has been chopped off, the unfinished product is cleared and the surface quality evaluated. The artist him or herself frequently decides how the surface of his/her sculpture is processed to give it its actual shine and life-like quality. Once the chaser separates the inlet and outlet canals and perhaps has welded together multipart poured material, he then virtuously shifts his attention to reworking the surfaces with a chaser iron (punches), a chisel, a file, a scraper or sanding or polishing tool. Faces, muscles and ornaments are then elaborated on meticulously, while the peculiarities and nuances of the object are accentuated and underscored.

The artist has the possibility of accompanying the further work or adding the finishing touches him or herself. The artists and craftspeople often work hand in hand during the detailed chasing procedure and the finishing stages.





*Metal surfaces,  
brought to life by patina*

## LIVING PATINA

Patination is the last step in creating the work of art. The patination specialist first concludes the natural process of oxidation. Then, depending on what influences the copper alloy is exposed to, the bronze changes in the course of time. The objective here is to precisely match and implement the artist's preference in terms of the colour nuances in the patination by means of direct cooperation. For doing so, Strassacker offers a uniquely diverse array of traditional compositions for patination solutions. The object of art is first dipped in the patina bath for a precisely specified period of time. Then additional patination

solutions are applied by hand and annealed with a gas flame. This enables the artists to obtain very unique colouring effects and shades, in order to intensify the character and the aura of the work of art. Afterwards the patinated surface is sealed off.



*An almost unlimited number of variations*





## INAL CABIR

---

Inal Cabir the ideal partner to represent our firm in the Arab region, because along with his activities as a salesman, he has also completed vocational training in design and craftsmanship to become a metal design technician. Inal Cabir is therefore the ideal person for all our customers to contact, even when they have very detailed questions. Inal Cabir is fluent in Arabic, English, Turkish, and German.



## EXPERTISE AND PARTNERSHIP

---



Strassacker is a professional partner for all those interested in the captivating world of bronze. Together with vast amounts of specialist know-how, our decades of experience have given rise to a broad range of product collections. In addition, the art foundry can also help with custom designs, and offers advice from the moment an idea is hatched to the finishing touches on site.



Ernst Strassacker GmbH & Co. KG Art Foundry

**Inal Cabir**

P.O.Box 325981 · Riyadh 11371, K.S.A.

Mobile +49 (0) 1729909415 · Mobile +996 (0) 504638233

Fax +966 (0) 12751076 · E-Mail cabirinal@yahoo.de

[www.strassacker.de](http://www.strassacker.de)